

Laser



diomax[®] 1550

EndoVenous Laser Occlusion (EVLO)

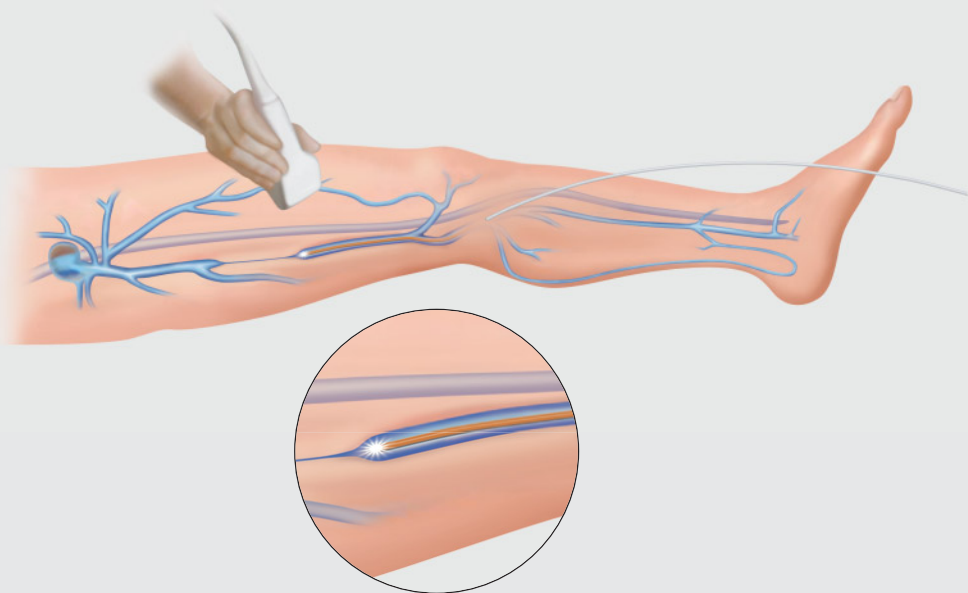
Focus Open
Silber 2010





diomax[®] 1550 –
minimal invasive occlusion
of insufficient veins

With EVLO (endovenous laser occlusion), KLS Martin offers a minimally invasive technique for use on an outpatient basis. It utilizes the energy of the laser beam to close the affected veins, thus preventing pathologic reflux.



diomax® 1550 – highest efficiency for ideal results

Why EVLO ?

Endovenous procedures are nowadays a fully accepted alternative to the classic vein stripping procedure.

Both the American Society of Vascular Surgery and the American Venous Forum recommend in their guidelines thermal endovenous procedures for the treatment of the incompetent great saphenous veins rather than the classical stripping:

„For treatment of the incompetent great saphenous vein (GSV), we recommend endovenous thermal ablation (radiofrequency or laser) rather than high ligation and inversion stripping of the saphenous vein to the level of the knee (GRADE 1B).”

Journal of Vascular Surgery, Volume 53, Issue 5, Supplement, Pages 2S-48S, May 2011

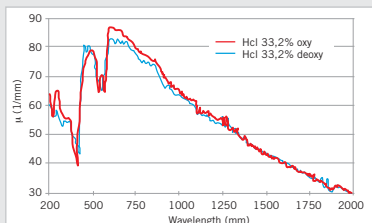
Why EVLO with a wavelength of 1550 nm ?

The wavelength of 1550 nm absorbs primarily in the water content of the blood and the vein wall. Compared to lower wavelengths it is characterized by a lower scattering effect (loss of energy over emission distance, Pic.1) which results in the possibility to achieve a high effectiveness at lower output powers. In comparison to wavelengths of 940 and 980 nm, half the initial energy results in the same effectiveness¹. This results in a lower risk of side effects and therefore in a more gentle treatment with lower pain rates.

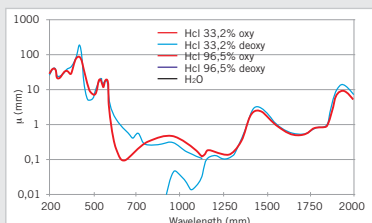
Furthermore the wavelength of 1550 nm allows for the ideal penetration depth of the laser energy of 0,25 to 1 mm¹ in blood to effectively reach the vein wall even in blood filled vessels.

„To decrease pain and undesirable extravasal tissues thermal damage, radiation has to be rapidly absorbed in vein wall and tumescent anesthetic. On the other hand, penetration depth cannot be very short because decrease of the energy absorbing tissue volume may lead to undesirable overheating in small volume. In our estimation, the penetration depth needs to be within 0.2-1.0 mm. As can be seen from the figure, the penetration depth in blood 1/μeff for wavelength 1.47 μm is less than 0.1 mm. On another hand, the penetration depth at 1.56 μm can be estimated as 0.25 mm in blood, and about 0.5 mm in vein wall tissue giving substantial advantage over operation at 1.47 μm. In summary, our consideration showed that the best conditions for EVLT among used wavelengths are realized for 1,56 μm.“

¹ Therapeutic Laser Applications and Laser Tissue Interactions IV, Vol. 10, Nr. 49, ISSN 1605-7422, 7371D



Pic. 1. Scattering coefficient in blood ¹



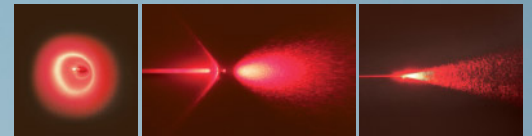
Pic. 2. Absorption of laser energy in blood ¹

diomax® 1550 – Combining flexibility and ease-of-use



Suitable for multiple disciplines

- Phlebology
- Proctology
- ENT

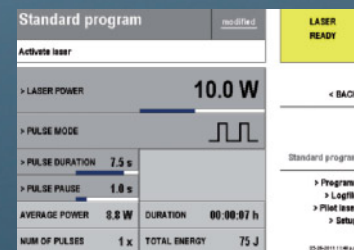


Application sets

sets with radially (360°), spherically and axially emitting laser fibers



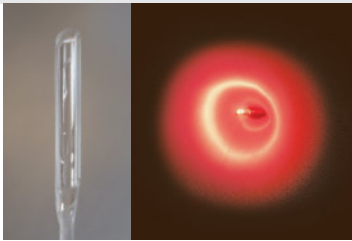
Sustainable training program



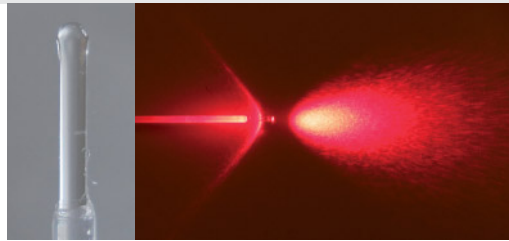
Ease-of-use

- Visual and audio feedback for precise guided energy delivery
- Step-by-step procedure guide in plain text
- Indication specific programs
- Award winning design

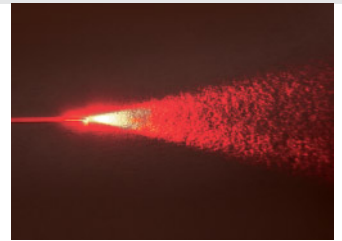
diomax[®] 1550 – Technical and purchasing information



VENEX 360°



VENEX Sphere



VENEX bare fiber

Item No.	Designation	SU	Emission profile	Introducer set	Fiber diameter
79-360-00-04	VENEX Sphere	5/pack	Cylindric	6 Fr / 11 cm	600 µm
79-350-00-04	VENEX 360°	5/pack	Radial	6 Fr / 11 cm	600 µm
79-380-03-04	VENEX 4 Fr/100 cm	5/pack	Axial	4 Fr / 100 cm	400 µm
79-380-02-04	VENEX 4 Fr/60 cm	5/pack	Axial	4 Fr / 60 cm	400 µm
79-380-01-04	VENEX 2 Fr/30 cm	5/pack	Axial	2 Fr / 30 cm	300 µm

Item No.	Designation	Wavelength
79-520-01-04	Diode laser diomax [®] 1550	1550 nm

Technical data	
Laser power	0.1 – 15 W
Laser wavelength	1550 nm
Operating modes	continuous (CW) and pulsed
Pulse modes	Single pulses, pulse trains and cyclical pulse
Operation	Soft keys plus rotary pushbutton (double-function switch)
Display/indicator	TFT color display, luminous ring
Programs	50 memory locations
Memory	Activation and error registers (logs)
Laser class	4



“Endovenous laser occlusion (EVLO) provides an excellent alternative to conventional surgical techniques.

As this minimally invasive procedure can be performed under local anesthesia, it can be used even for multimorbid patients.”

*Professor Michael Jünger
Director of the Dermatological Hospital,
Ernst Moritz Arndt University of Greifswald (Germany)*



“The choice of different fiber geometries enables me to readily have the right fiber for each specific indication. The VENEX® sphere fiber significantly reduces side effects while providing highest user comfort.

The VENEX® 360° fiber also reduces side effects and is especially efficient in large diameter veins. In order to ablate small saphenous veins, I prefer the VENEX® 2 Fr/30 cm due to the low invasiveness of the thin catheters.”

*Professor Zbigniew Rybak
Vascular Surgery, University Wroclaw, Poland*

KLS Martin Group

Karl Leibinger GmbH & Co. KG
78570 Mühlheim · Germany
Tel. +49 74 63 838-0
info@klsmartin.com

KLS Martin GmbH + Co. KG
79224 Umkirch · Germany
Tel. +49 76 65 98 02-0
info@klsmartin.com

Stuckenbrock Medizintechnik GmbH
78532 Tuttlingen · Germany
Tel. +49 74 61 16 58 80
verwaltung@stuckenbrock.de

Rudolf Buck GmbH
78570 Mühlheim · Germany
Tel. +49 74 63 99 516-30
info@klsmartin.com

KLS Martin France SARL
68000 Colmar · France
Tel. +33 3 89 21 66 01
france@klsmartin.com

Martin Italia S.r.l.
20871 Vimercate (MB) · Italy
Tel. +39 039 605 67 31
italia@klsmartin.com

Martin Nederland/Marned B.V.
1270 AG Huizen · The Netherlands
Tel. +31 35 523 45 38
nederland@klsmartin.com

KLS Martin UK Ltd.
Reading RG1 3EU · United Kingdom
Tel. +44 1189 000 570
uk@klsmartin.com

Nippon Martin K.K.
Osaka 541-0046 · Japan
Tel. +81 6 62 28 90 75
nippon@klsmartin.com

KLS Martin L.P.
Jacksonville, FL 32246 · USA
Tel. +1 904 641 77 46
usa@klsmartin.com

Gebrüder Martin GmbH & Co. KG
Representative Office
121471 Moscow · Russia
Tel. +7 499 792-76-19
russia@klsmartin.com

Gebrüder Martin GmbH & Co. KG
Representative Office
201203 Shanghai · China
Tel. +86 21 2898 6611
china@klsmartin.com

Gebrüder Martin GmbH & Co. KG
Representative Office
Dubai · United Arab Emirates
Tel. +971 4 454 16 55
middleeast@klsmartin.com

Gebrüder Martin GmbH & Co. KG
A company of the KLS Martin Group
KLS Martin Platz 1 · 78532 Tuttlingen · Germany
Postfach 60 · 78501 Tuttlingen · Germany
Tel. +49 7461 706-0 · Fax +49 7461 706-193
info@klsmartin.com · www.klsmartin.com

